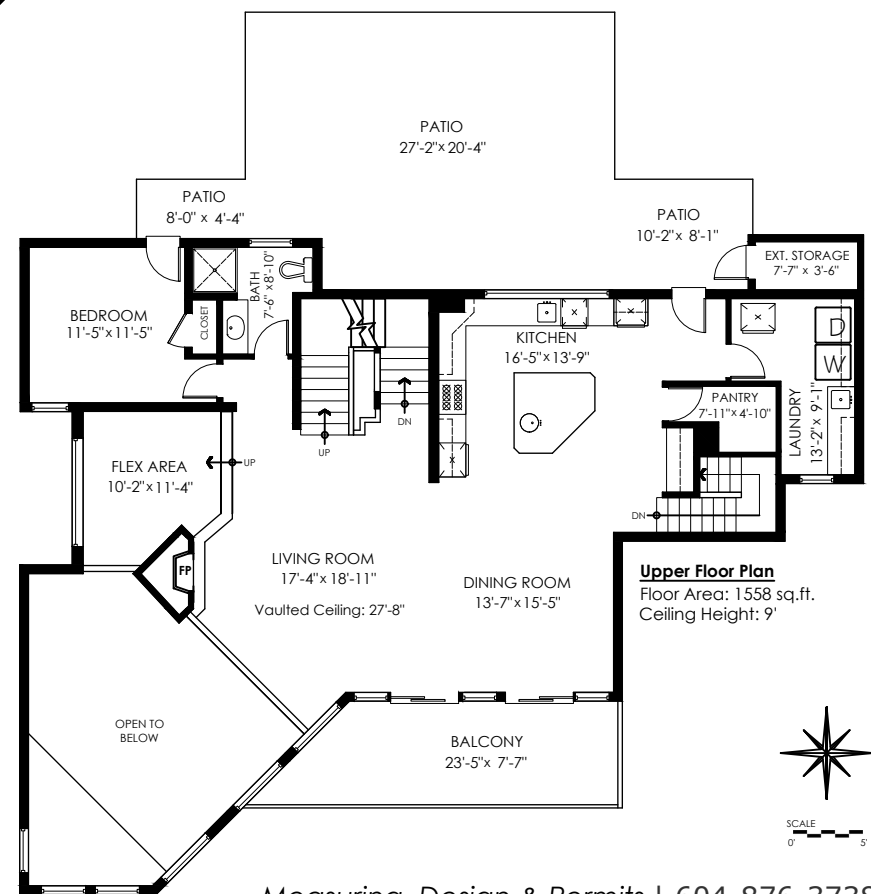
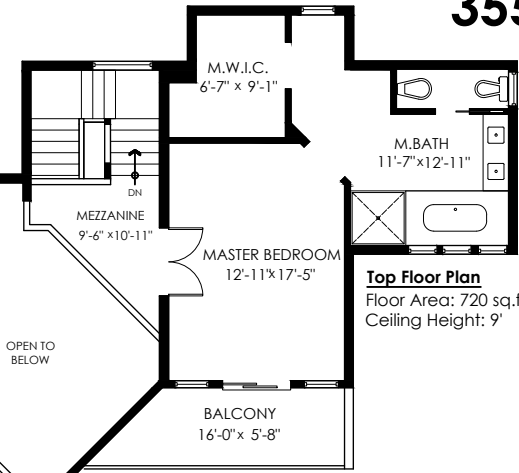
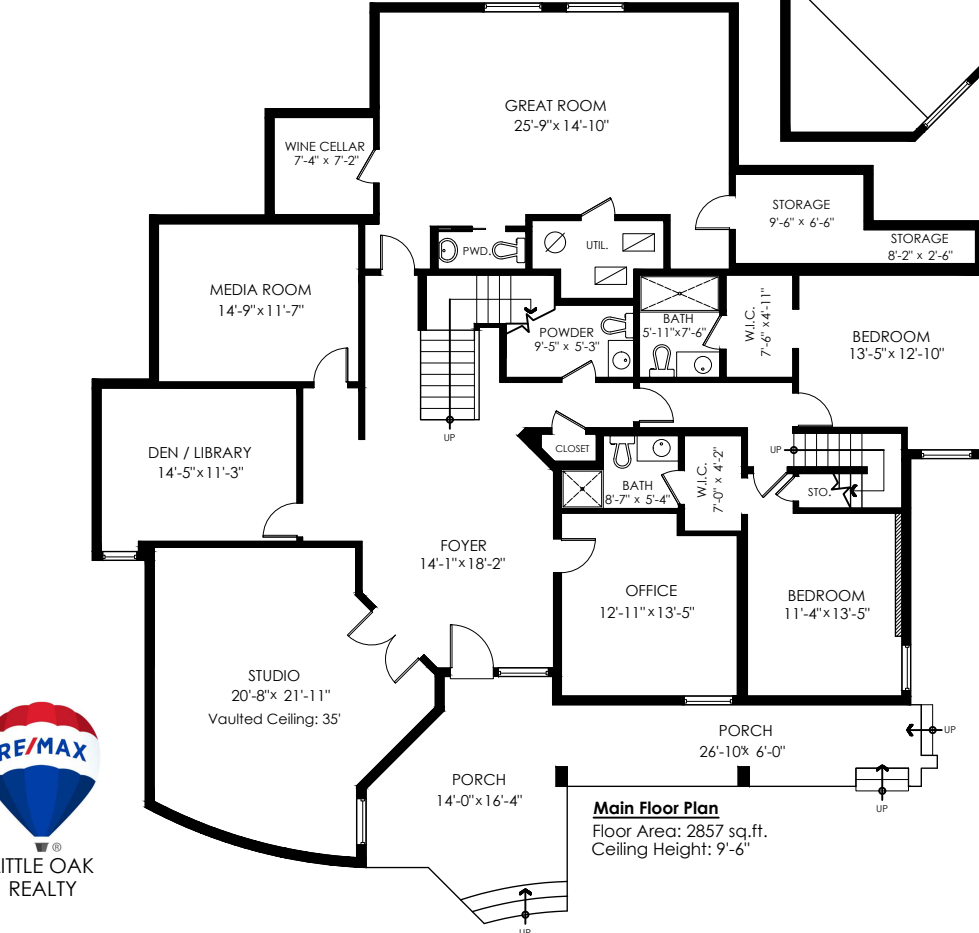
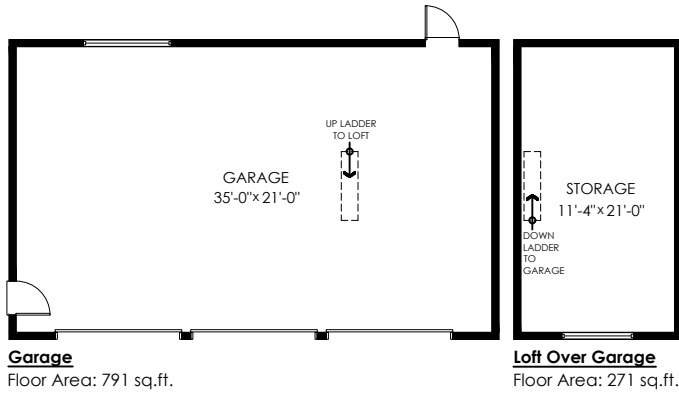


Paul Wiebe & Stan Wiebe

604-308-1518 | paul@paulwiebe.com | www.paulwiebe.com

35503 Old Yale Rd, Abbotsford



Main Floor: 2,857 sq.ft.
Upper Floor: 1,558 sq.ft.
Top Floor: 720 sq.ft.
Total: 5,135 sq.ft.

Garage: 791 sq.ft.
Garage Loft: 271 sq.ft.
Patio: 648 sq.ft.
Ext. Storage: 34 sq.ft.
Balconies: 281 sq.ft.
Porch: 341 sq.ft.
Total Extras: 2,366 sq.ft.

Open To Below: 1,123 sq.ft.



Measuring, Design & Permits | 604-876-3738



INFO@COTALA.COM
 (604) 514-9589
 WWW.COTALA.COM

Main Floor: 2,857 sq.ft.
 Upper Floor: 1,558 sq.ft.
 Top Floor: 720 sq.ft.
Total: 5,135 sq.ft.

Garage: 791 sq.ft.
 Garage Loft: 271 sq.ft.
 Patio: 648 sq.ft.
 Ext. Storage: 34 sq.ft.
 Balconies: 281 sq.ft.
 Porch: 341 sq.ft.
Total Extras: 2,366 sq.ft.

Houses:

Total square footage is calculated to the outside of exterior walls.

Room sizes are dimensioned to the inside of the walls. This is because you need to know what you can fit in that room. When you add up the total of the room sizes it will not equal the total square footage of the property. This method of adding up room sizes will not account for wall thickness, interior hallways, exterior wall thickness, closets and many other areas that are included is total sqft.

Any space that is not suitable for year-round use or has a ceiling height of less than 4 feet will not be considered living space. An example of this includes a deck, garage or attic. If there isn't heat, insulation or room for an adult to stand, then it will not be included in the living space.

Cantilevered fireplaces, chimneys and plant windows are also not considered living space.

Included in the living space will be the measurements for stair treads for the floor they service as well as the space under the lowest floor's stairs.

Areas open to the floor below (also known as double height ceilings) are not considered living space because there is no floor.

35503 Old Yale Rd, Abbotsford

