

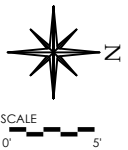
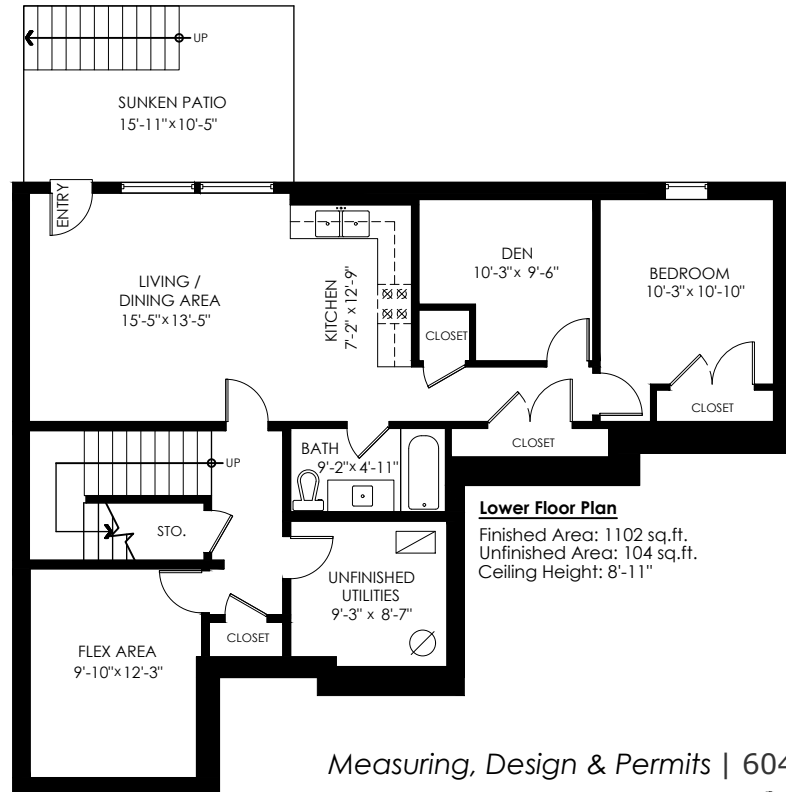
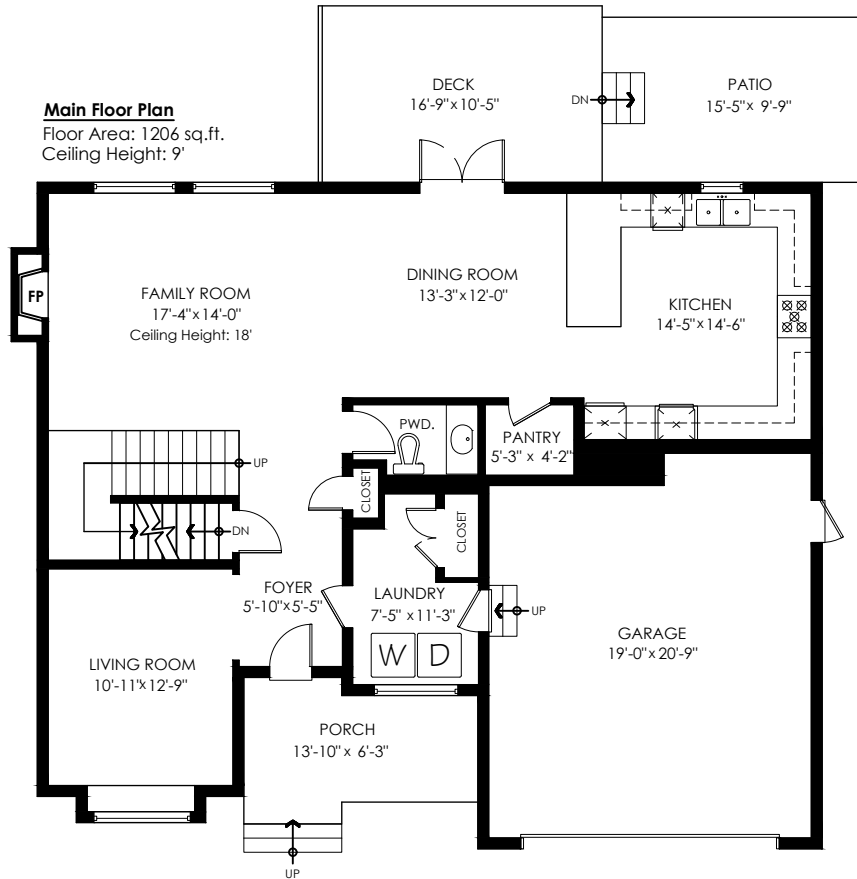
Upper Floor: 1,426 sq.ft.
 Main Floor: 1,206 sq.ft.
 Finished Lower Floor: 1,102 sq.ft.
Sub Total: 3,734 sq.ft.

4389 Auguston Pkwy N, Abbotsford

Unfinished Floor: 104 sq.ft.
Total: 3,838 sq.ft.

Garage: 445 sq.ft.
 Patio: 150 sq.ft.
 Sunken Patio: 165 sq.ft.
 Deck: 172 sq.ft.
 Porch: 100 sq.ft.
Total Extras: 1,032 sq.ft.

Open To Below: 210 sq.ft.



Measuring, Design & Permits | 604-876-3738



4389 Auguston Pkwy N, Abbotsford

INFO@COTALA.COM
(604) 514-9589
WWW.COTALA.COM

Houses:

Total square footage is calculated to the outside of exterior walls.

Room sizes are dimensioned to the inside of the walls. This is because you need to know what you can fit in that room. When you add up the total of the room sizes it will not equal the total square footage of the property. This method of adding up room sizes will not account for wall thickness, interior hallways, exterior wall thickness, closets and many other areas that are included is total sqft.

Any space that is not suitable for year-round use or has a ceiling height of less than 4 feet will not be considered living space. An example of this includes a deck, garage or attic. If there isn't heat, insulation or room for an adult to stand, then it will not be included in the living space.

Cantilevered fireplaces, chimneys and plant windows are also not considered living space.

Included in the living space will be the measurements for stair treads for the floor they service as well as the space under the lowest floor's stairs.

Areas open to the floor below (also known as double height ceilings) are not considered living space because there is no floor.

Upper Floor: 1,426 sq.ft.
Main Floor: 1,206 sq.ft.
Finished Lower Floor: 1,102 sq.ft.
Sub Total: 3,734 sq.ft.

Unfinished Floor: 104 sq.ft.
Total: 3,838 sq.ft.

Garage: 445 sq.ft.
Patio: 150 sq.ft.
Sunken Patio: 165 sq.ft.
Deck: 172 sq.ft.
Porch: 100 sq.ft.
Total Extras: 1,032 sq.ft.

Open To Below: 210 sq.ft.

