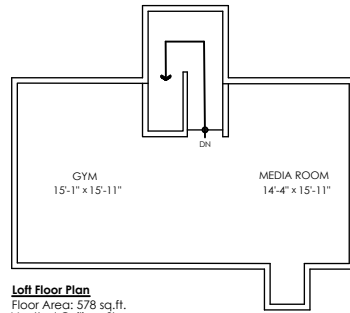




**RESULTS THAT MOVE YOU!**  
**Sarah Toop**  
 PERSONAL REAL ESTATE CORPORATION  
**604-855-8060**

REALTOR  
 #1 REALTOR  
 CENTURY 21

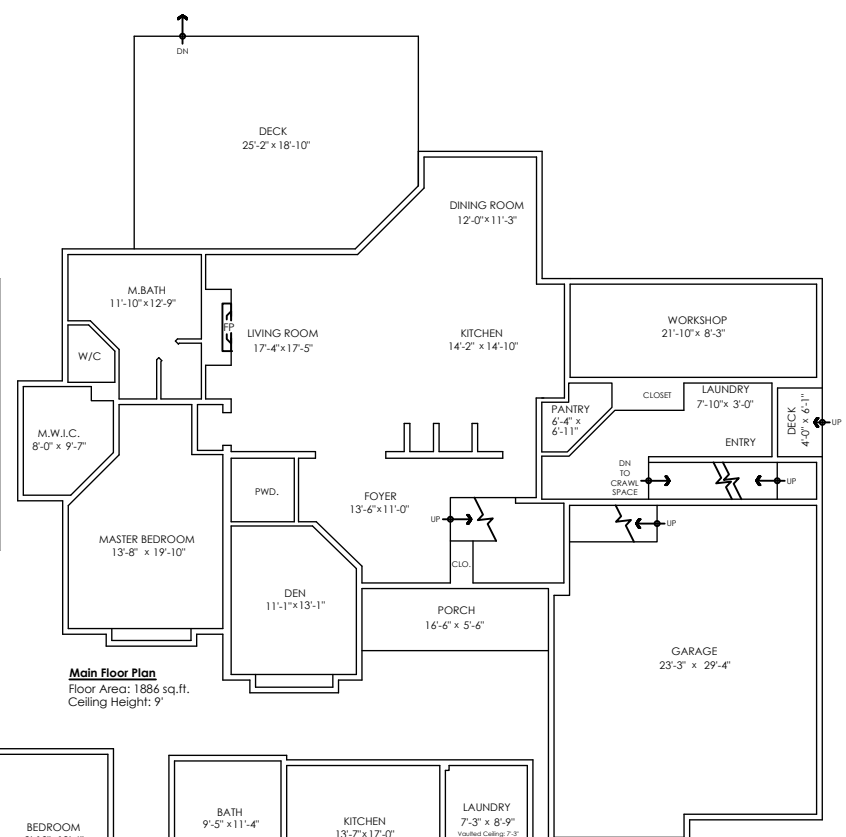
# 4663 Community St, Chilliwack



**Loft Floor Plan**  
 Floor Area: 578 sq.ft.  
 Vaulted Ceiling: 8'



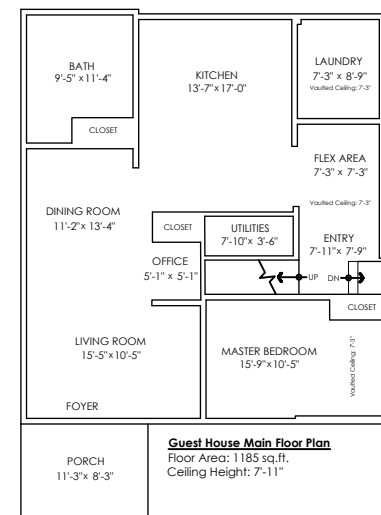
**Upper Floor Plan**  
 Floor Area: 1,908 sq.ft.  
 Ceiling Height: 8'



**Main Floor Plan**  
 Floor Area: 1,886 sq.ft.  
 Ceiling Height: 9'



**Guest House Upper Floor Plan**  
 Floor Area: 429 sq.ft.  
 Vaulted Ceiling: 6'-8"



**Guest House Main Floor Plan**  
 Floor Area: 1,185 sq.ft.  
 Ceiling Height: 7'-11"

Main Floor:	1,886 sq.ft.
Upper Floor:	1,908 sq.ft.
Loft Floor:	578 sq.ft.
<b>Main House Total:</b>	<b>4,372 sq.ft.</b>
<b>Main House Crawl:</b>	<b>1886 sq.ft.</b>
Guest House Main Floor:	1,185 sq.ft.
Guest House Upper Floor:	429 sq.ft.
<b>Guest House Total:</b>	<b>1,614 sq.ft.</b>
Garage:	686 sq.ft.
Workshop:	195 sq.ft.
Ext. Storage:	1,052 sq.ft.
Decks:	482 sq.ft.
Porchs:	184 sq.ft.
<b>Total Extras:</b>	<b>2,599 sq.ft.</b>

